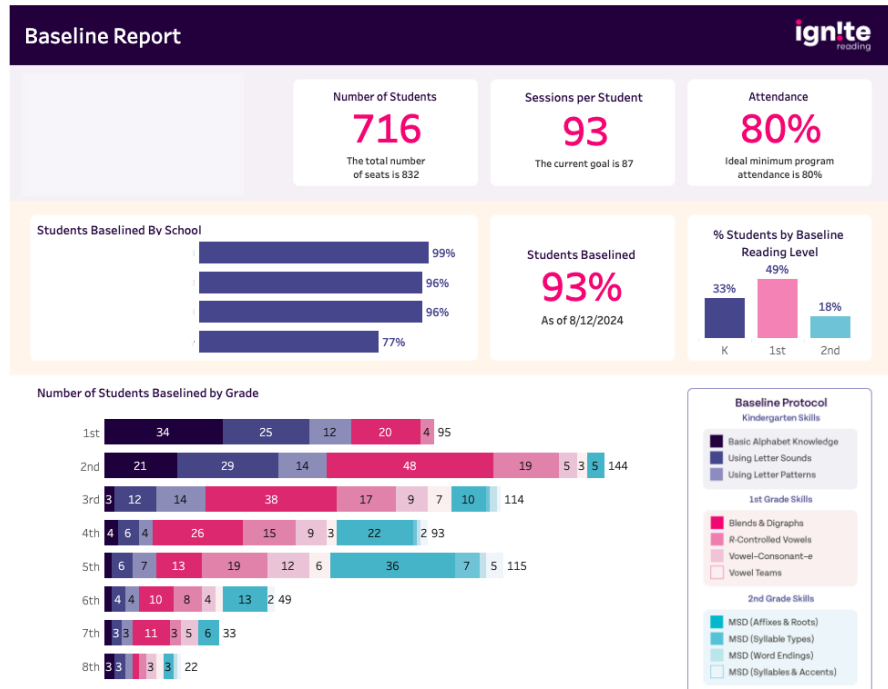


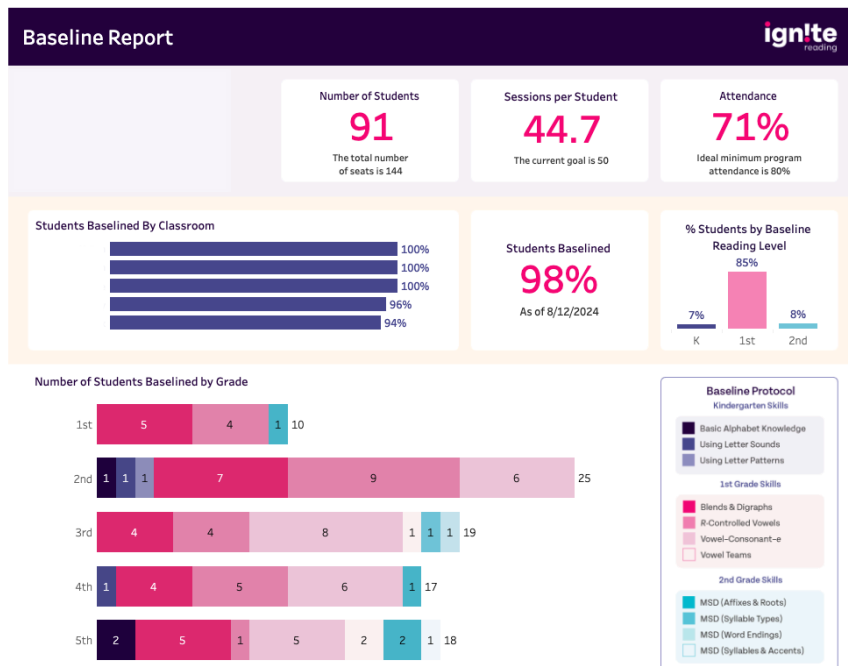
# Baseline Data Report Guide

This document provides a summary of the data reports that our partners will receive during the Baseline Data Meeting. This meeting occurs after students begin in the program and complete their baseline assessments.

## District Baseline Data Overview



## School Baseline Data Overview



[Student Level Data Report](#)

The student level data report is a **spreadsheet** that shows the baseline unit/protocol placement, the difference in the baseline from the student grade level, and attendance rate for the first week of program.

Baseline Data Metrics	
District and School Level Data Report	
<b>Number of Students</b>	Number of students enrolled in Ignite Reading. Mirrors the school's roster
<b>Sessions per student</b>	This metric shows the average number of sessions that each student has had in the program. <i>Students need at least 2-3 sessions to complete their baseline assessments.</i>
<b>Students Baselined</b>	This percentage will show how many students have completed the unit/protocol placement assessment and High Frequency Words assessment.
<b>Attendance</b>	This percentage shows the rate at which students enrolled attending their sessions up until the report was pulled.
<b>Students Baselined by Classroom</b>	This chart will show the lowest 5 classrooms by the number of students who have been baselined.
<b># Students by Baseline Reading Level</b>	This table calculates the percentage of students reading at each grade level at the beginning of the program.
<b>Number of Students Baselined by Grade</b>	This shows the difference in unit/protocol placement by grade level can help highlight the difference in mastery within one grade and trends.
Student Level Data Report	
<b>Baseline</b>	The instructional unit that the student placed into at the beginning of program
<b>Baseline Behind</b>	This identifies how far the student's baseline unit/protocol is behind their grade level.
<b>Attendance Rate</b>	This column shows the student's attendance rate from the start of the program to the report date. Our goal of a 80% attendance rate creates the greatest opportunity for students to complete their Progress Monitoring assessment within the 20-day instructional window.